

Diesel engine CAT D398, 850 KW



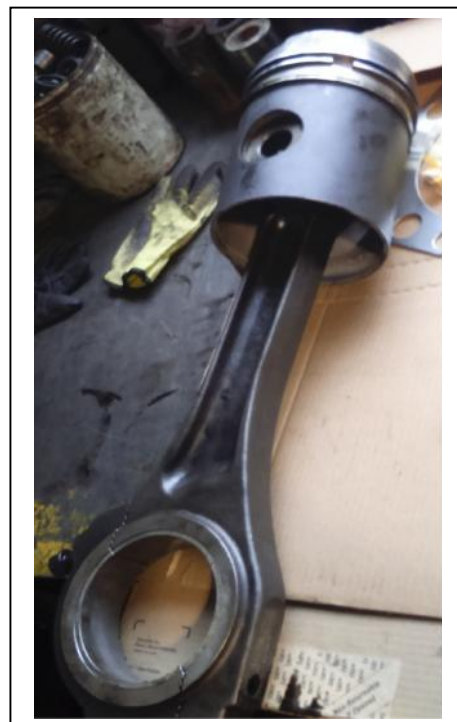
Base line fuel consumption: 0,830 kg fuel x 1 kw,
100% load.



OUR WORK

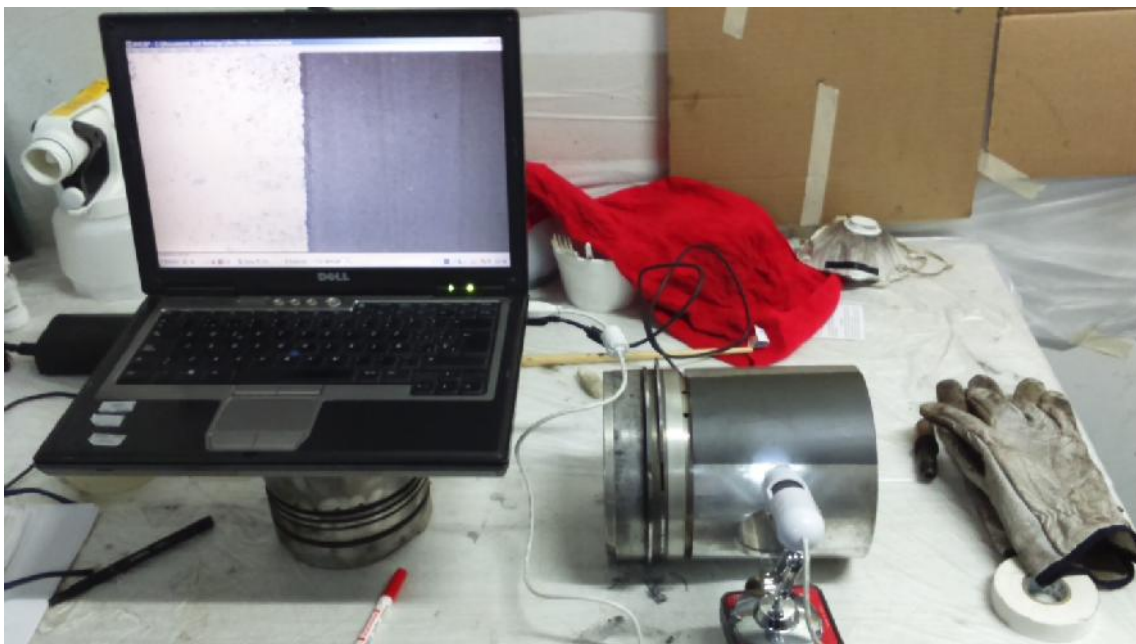
- Open engine, application Nano Coat Surface in each cylinder.
- Replace injectors.
- Change the fuel flow.
- Change coolant flow.
- Add oil engine additive.
- Add fuel additive.
- Add coolant additive.
- Install monitoring system TO GET DATA ENGINE.

PROCESS TO COAT NANOSURFACE IN EACH PISTON.





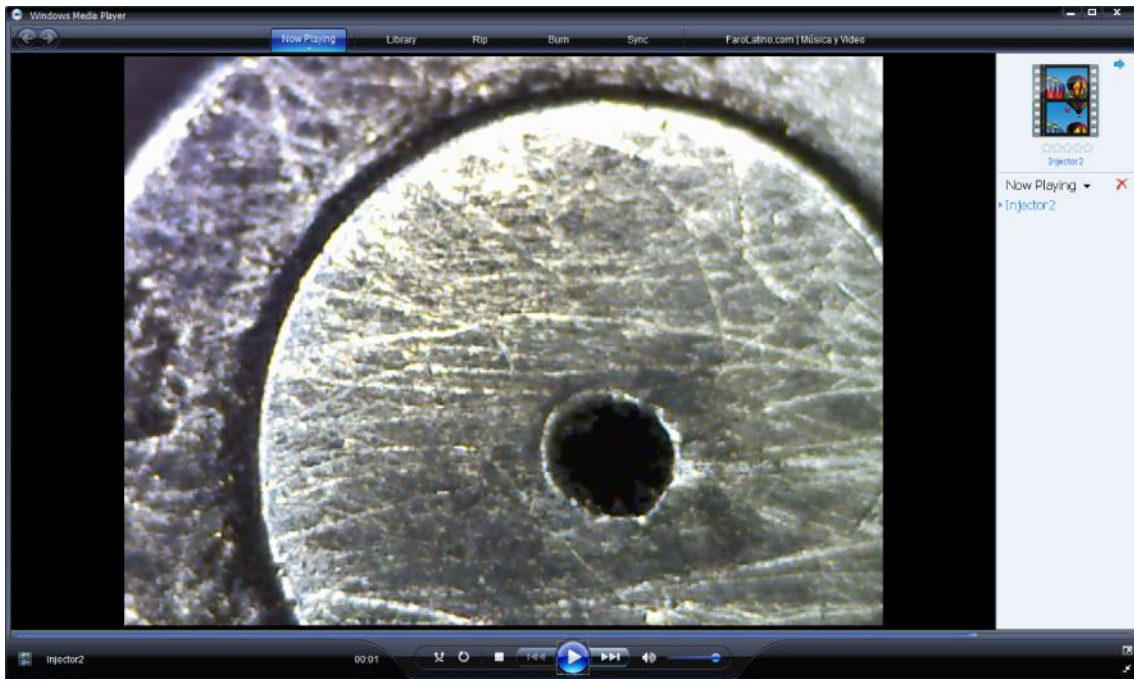
ANALYZER NANO COATING AND WEAR TESTING



VALVES CONTROL



INYECTOR CONTROL.



FINAL TESTING

- Fuel consumption: 0,223 kg fuel x 1 kw, 100% load. (4 time less).
- Reduce volume contamination.
- Increase torque, power.
- Reduce noise engine.
- Reduce drastically the exhaust temperature.



www.rpconnect.com

+63 915 491 0778 +63 915 340 7543

17 Parizska, Prague, Czech Republic 11800

1 Shangri-la Place -T2-12R, St. Francis Street, Mandaluyong City, Philippines 1555